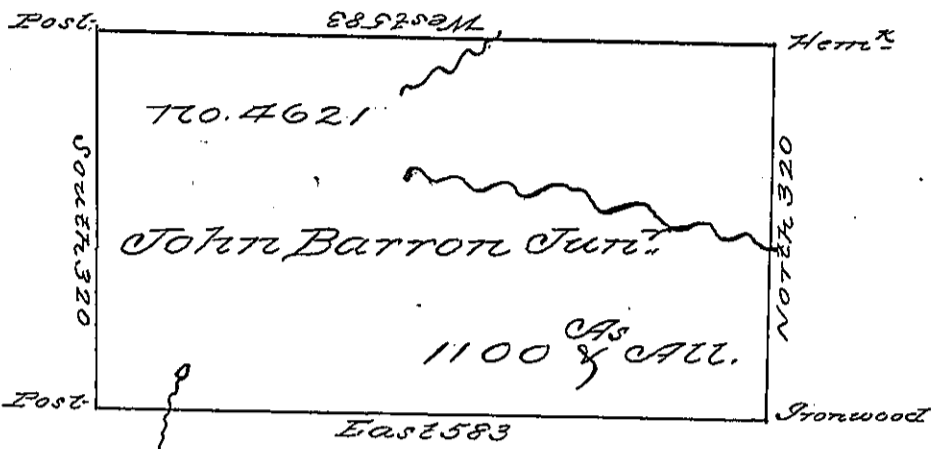


(Portage - Potter)

0297220



0297226

0297222

Pr. 23.6

Situate on the Waters of Sinamankoningo  
 Creek Northumberland County containing  
 1100<sup>as</sup> and the usual allowance for Roads  
 Surveyed the 24<sup>th</sup> Day of June 1794 in per-  
 suance of a Warrant dated the 24 Day of Janua-  
 ry 1794  
 John Canan D.S.  
 Daniel Brodhead Esq. S. G.

IN TESTIMONY that the above is a copy of the original remaining on file in the  
 Department of Internal Affairs of Pennsylvania, made con-  
 formably to an Act of Assembly approved the 16th day of  
 February, 1833, I have hereunto set my Hand and caused  
 the Seal of said Department to be affixed at Harrisburg, this

sixth day of July 1897

*James W. Latta*  
 Secretary of Internal Affairs.